



**19 Deanland Drive, Liverpool, L24 1WA**  
**Offers over £190,000**

## The Property Perspective

Garden Place, Victoria Street, Altrincham, WA14 1ET

Tel: 08456 800 262 Fax: 08456 800 272

Email: [enquiries@thepropertyperspective.co.uk](mailto:enquiries@thepropertyperspective.co.uk) [www.thepropertyperspective.co.uk](http://www.thepropertyperspective.co.uk)

PROPERTY  
PERSPECTIVE

Situated in the popular village of New Broughton, this property on Green Meadows enjoys a pleasant residential setting with easy access to a range of local amenities including shops, cafés and everyday services. The nearby town of Wrexham offers a wider selection of retail and leisure facilities, along with well-regarded schools such as Ysgol Derwenfa and secondary options close by. Excellent transport links connect the area to Chester and surrounding regions via road and rail networks, while nearby countryside and green spaces provide opportunities for walking and outdoor recreation, making this an ideal location for families and professionals alike.

This beautiful end terrace home is well presented throughout and offers comfortable, modern living with the added benefit of a particularly generous rear garden. The ground floor comprises a welcoming entrance hallway leading to a fitted kitchen with integrated oven and gas hob, a convenient WC, and a bright living room featuring double doors opening onto the garden. To the first floor are three well-proportioned bedrooms, including a spacious principal bedroom with dual front-facing windows, alongside a contemporary family bathroom with a three-piece suite and over-bath shower. Externally, the property boasts a large rear garden with patio, lawn and raised decking area, as well as side access and multiple storage sheds, while to the front a driveway provides off-road parking.

### Front

Driveway

### Living Room 19'0" x 13'5" (5.8m x 4.1m)

Carpet, double doors to garden, painted walls, 2 x radiators, storage cupboard under stairs.

### Kitchen 10'2" x 6'6" (3.1m x 2m)

Wall mounted and base units, wall mounted and base units, integrated oven, gas hob, extractor, space for washing machine and fridge freezer, painted walls, tiled floor, window to front.

### Cloaks/WC 5'6" x 2'7" (1.7m x 0.8m)

Tiled floor, radiator, window to side, toilet, sink, painted walls.

### FIRST FLOOR

### Bedroom 13'5" x 9'2" (4.1m x 2.8m)

Front facing, 2 x windows to front, storage cupboard over stairs, carpet, painted walls.

### Bedroom 9'6" x 7'6" (2.9m x 2.3m)

Rear facing, carpet, painted walls, radiator, window to rear.

### Bedroom 8'10" x 5'6" (2.7m x 1.7m)

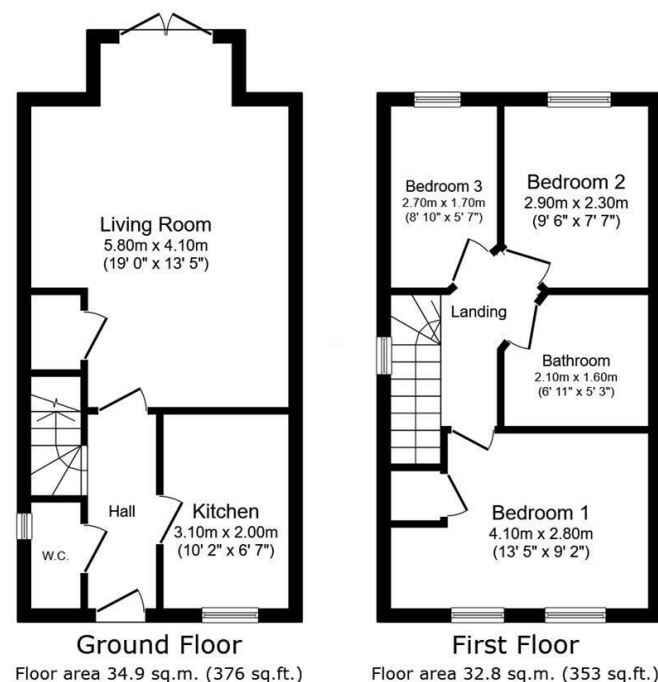
Rear facing, carpet, painted walls, radiator, window to rear.

### Bathroom 6'10" x 5'2" (2.1m x 1.6m)

Tiled and painted walls, tiled floor, three piece suite with over bath shower, mounted mirror, heated towel rail.

### Rear Garden

Patio, lawn, side gated entrance, raised decking at rear, wood fence borders, power socket, 3 sheds to side.



Total floor area: 67.7 sq.m. (729 sq.ft.)

This floor plan is for illustrative purposes only. It is not drawn to scale. Any measurements, floor areas (including any total floor area), openings and orientations are approximate. No details are guaranteed, they cannot be relied upon for any purpose and do not form any part of any agreement. No liability is taken for any error, omission or misstatement. A party must rely upon its own inspection(s). Powered by [www.Propertybox.io](http://www.Propertybox.io)

PROPERTY  
PERSPECTIVE